



## 5 Low Cottages

Ilderton, Alnwick, NE66 4YD

Price Guide £225,000

[www.aitchisons.co](http://www.aitchisons.co)



Nestled in the small village of Ilderton which is on the edge of the Northumberland National Park, some five miles south of Wooler, this attractive stone built cottage offers well proportioned living accommodation with character and charm.

The cottage is entered at the rear into a entrance hall with a useful storage cupboard and gives access into a large open plan living room/kitchen, with a stone built inglenook fireplace with a multi-fuel stove and with a pine kitchen with an excellent range of units with appliances, there is a stable door from the kitchen area into the front garden. There is a useful utility room, a well appointed shower room and two double bedrooms, one with a fitted wardrobe. The cottage benefits from full double glazing and solid fuel central heating in tandem with an electric boiler.

Enclosed lawn garden at the front of the cottage with mature shrubberies and trees and a garden at the rear with raised vegetable plots, a greenhouse and garden shed. Single garage with lighting and power connected.

The quaint surroundings of Ilderton enhance the appeal of this property, offering a tranquil lifestyle while still being within easy reach of the historic market towns of Wooler and Alnwick, where there are excellent shopping and recreational facilities.

This property presents an excellent opportunity for those looking to embrace countryside living, with picturesque views and a friendly community atmosphere. Whether you are seeking a permanent residence or a weekend getaway, this cottage in Ilderton is a must view. Contact our Wooler office to arrange an appointment.





## Entrance Hall

6'4 x 16'9 (1.93m x 5.11m)

Partially glazed entrance door at the rear of the property giving access to the hall, which has a built-in shelved double cupboard, a cloaks hanging area and fitted bench seating. Central heating radiator.

## Open Plan Living Room/Kitchen

15'9 x 22'4 (4.80m x 6.81m)

A stunning open plan room with a large stone built inglenook fireplace with a raised hearth with quarry tiles and a multi-fuel stove. Window at the front and a stable entrance door giving access to the garden. The kitchen area is fitted with a range of pine wall and floor units which includes two glass display cabinets and wooden worktop surfaces with a tiled splashback. Built-in oven, four ring ceramic hob and a Belfast sink below the window to the rear. Underfloor heating, central heating radiator a telephone point and fibre optic broadband connection, plumbing for a dishwasher.

## Utility Room

4'2 x 4'6 (1.27m x 1.37m)

With a one and a half bowl stainless steel sink and drainer with cupboard space below and above, the utility room has plumbing for an automatic washing machine and a window to the rear.

## Internal Hall

2'9 x 14'1 (0.84m x 4.29m)

Giving access to the two bedrooms and the shower room the hall has a central heating radiator.

## Bedroom 1

15'9 x 11'4 (4.80m x 3.45m)

A generous dual aspect double bedroom with a window at the front and rear, a central heating radiator and access to the loft.

## Bedroom 2

12'8 x 9' (3.86m x 2.74m)

A good sized double bedroom with a window at the front

with a central heating radiator below. Built-in double wardrobe with extra cupboard space above.

## Shower Room

5'7 x 10'9 (1.70m x 3.28m)

Fitted with a toilet and handbasin in white with a shower light and socket above. There is a walk-in shower. Central heating radiator, a frosted window to the rear, a double medicine cabinet and recessed ceiling spotlights. Underfloor heating.

## Garage

A single garage with an up and over door at the front, the garage has lighting and power connected.

## Garden

Good sized enclosed front garden with a lawn with mature shrubberies and trees. Garden to the rear with raised vegetable plots, a timber garden shed and a greenhouse.

## General Information

All windows fully double glazed doors are not.

Full solid fuel central heating. The central heating works from a back boiler from the multi-fuel stove, in tandem with the Amptec electric boiler on Economy 7 tariff.

Tenure - Freehold.

All fitted floor coverings are included in the sale.

Council Tax Band-B

Services - water supply by spring from neighbouring Estate. mains electric, septic tank and reed bed system installed in 2004.

Energy Rating - TBC.

## Agency Information

OFFICE OPENING HOURS

Monday - Friday 9.00 - 17.00

Saturday 9.00 - 12.00

## FIXTURES & FITTINGS

Items described in these particulars are included in sale, all other items are specifically excluded. All heating systems





and their appliances are untested.

## VIEWING

Strictly by appointment with the selling agent.

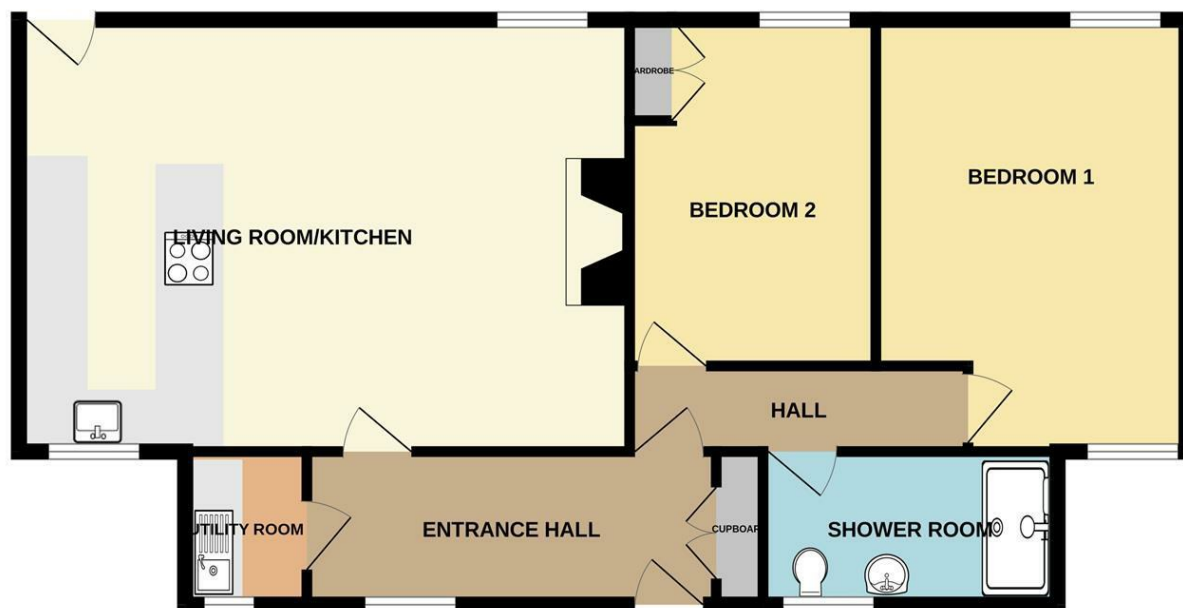








GROUND FLOOR  
839 sq.ft. (77.9 sq.m.) approx.



TOTAL FLOOR AREA : 839 sq.ft. (77.9 sq.m.) approx.  
Whilst every attempt has been made to ensure the accuracy of the floorplan contained here, measurements of doors, windows, rooms and any other items are approximate and no responsibility is taken for any error, omission or mis-statement. This plan is for illustrative purposes only and should be used as such by any prospective purchaser. The services, systems and appliances shown have not been tested and no guarantee as to their operability or efficiency can be given.  
Made with Metropix ©2025



Important Information You may download, store and use the material for your own personal use and research. You may not republish, retransmit, redistribute or otherwise make the material available to any party or make the same available on any website, online service or bulletin board of your own or of any other party or make the same available in hard copy or in any other media without the website owner's express prior written consent. The website owner's copyright must remain on all reproductions of material taken from this website.

Berwick Office  
36 Hide Hill, Berwick-upon-Tweed  
Northumberland, TD15 1AB

T: (01289) 307571  
F: (01289) 302948  
E: [berwick@aitchisons.co](mailto:berwick@aitchisons.co)

Wooler Office  
25 High Street, Wooler  
Northumberland, NE71 6BU

T: (01668) 281819  
F: (01668) 281717  
E: [wooler@aitchisons.co](mailto:wooler@aitchisons.co)



Zoopa.co.uk

